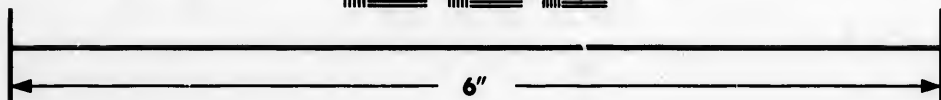
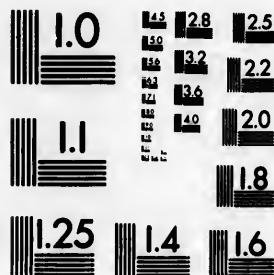


**IMAGE EVALUATION
TEST TARGET (MT-3)**



**Photographic
Sciences
Corporation**

23 WEST MAIN STREET
WEBSTER, N.Y. 14580
(716) 872-4503



**CIHM/ICMH
Microfiche
Series.**

**CIHM/ICMH
Collection de
microfiches.**



Canadian Institute for Historical Microreproductions / Institut canadien de microreproductions historiques



© 1985

Technical and Bibliographic Notes/Notes techniques et bibliographiques

The Institute has attempted to obtain the best original copy available for filming. Features of this copy which may be bibliographically unique, which may alter any of the images in the reproduction, or which may significantly change the usual method of filming, are checked below.

L'Institut a microfilmé le meilleur exemplaire qu'il lui a été possible de se procurer. Les détails de cet exemplaire qui sont peut-être uniques du point de vue bibliographique, qui peuvent modifier une image reproduite, ou qui peuvent exiger une modification dans la méthode normale de filmage sont indiqués ci-dessous.

- | | |
|--|--|
| <input type="checkbox"/> Coloured covers/
Couverture de couleur | <input checked="" type="checkbox"/> Coloured pages/
Pages de couleur |
| <input type="checkbox"/> Covers damaged/
Couverture endommagée | <input checked="" type="checkbox"/> Pages damaged/
Pages endommagées |
| <input type="checkbox"/> Covers restored and/or laminated/
Couverture restaurée et/ou pelliculée | <input type="checkbox"/> Pages restored and/or laminated/
Pages restaurées et/ou pelliculées |
| <input type="checkbox"/> Cover title missing/
Le titre de couverture manque | <input checked="" type="checkbox"/> Pages discoloured, stained or foxed/
Pages décolorées, tachetées ou piquées |
| <input type="checkbox"/> Coloured maps/
Cartes géographiques en couleur | <input type="checkbox"/> Pages detached/
Pages détachées |
| <input type="checkbox"/> Coloured ink (i.e. other than blue or black)/
Encre de couleur (i.e. autre que bleue ou noire) | <input checked="" type="checkbox"/> Showthrough/
Transparence |
| <input type="checkbox"/> Coloured plates and/or illustrations/
Planches et/ou illustrations en couleur | <input type="checkbox"/> Quality of print varies/
Qualité inégale de l'impression |
| <input type="checkbox"/> Bound with other material/
Relié avec d'autres documents | <input type="checkbox"/> Includes supplementary material/
Comprend du matériel supplémentaire |
| <input type="checkbox"/> Tight binding may cause shadows or distortion
along interior margin/
Le reliure serrée peut causer de l'ombre ou de la
distorsion le long de la marge intérieure | <input type="checkbox"/> Only edition available/
Seule édition disponible |
| <input type="checkbox"/> Blank leaves added during restoration may
appear within the text. Whenever possible, these
have been omitted from filming/
Il se peut que certaines pages blanches ajoutées
lors d'une restauration apparaissent dans le texte,
mais, lorsque cela était possible, ces pages n'ont
pas été filmées. | <input type="checkbox"/> Pages wholly or partially obscured by errata
slips, tissues, etc., have been refilmed to
ensure the best possible image/
Les pages totalement ou partiellement
obscurcies par un feuillet d'errata, une pelure,
etc., ont été filmées à nouveau de façon à
obtenir la meilleure image possible. |
| <input checked="" type="checkbox"/> Additional comments:
Commentaires supplémentaires: | Docket title page is bound in as last page in book but filmed as first page on fiche. There are some creases in the middle of the pages. |

This item is filmed at the reduction ratio checked below/
Ce document est filmé au taux de réduction indiqué ci-dessous.

10X	12X	14X	16X	18X	20X	22X	24X	26X	28X	30X	32X
<input type="checkbox"/>	<input type="checkbox"/>	<input type="checkbox"/>	<input type="checkbox"/>	<input type="checkbox"/>	<input type="checkbox"/>	<input type="checkbox"/>	<input checked="" type="checkbox"/>	<input type="checkbox"/>	<input type="checkbox"/>	<input type="checkbox"/>	<input type="checkbox"/>

The copy filmed here has been reproduced thanks to the generosity of:

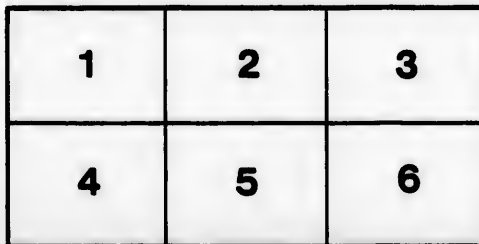
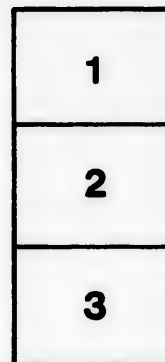
New Brunswick Museum
Saint John

The images appearing here are the best quality possible considering the condition and legibility of the original copy and in keeping with the filming contract specifications.

Original copies in printed paper covers are filmed beginning with the front cover and ending on the last page with a printed or illustrated impression, or the back cover when appropriate. All other original copies are filmed beginning on the first page with a printed or illustrated impression, and ending on the last page with a printed or illustrated impression.

The last recorded frame on each microfiche shall contain the symbol \rightarrow (meaning "CONTINUED"), or the symbol ∇ (meaning "END"), whichever applies.

Maps, plates, charts, etc., may be filmed at different reduction ratios. Those too large to be entirely included in one exposure are filmed beginning in the upper left hand corner, left to right and top to bottom, as many frames as required. The following diagrams illustrate the method:



L'exemplaire filmé fut reproduit grâce à la générosité de:

New Brunswick Museum
Saint John

Les images suivantes ont été reproduites avec le plus grand soin, compte tenu de la condition et de la netteté de l'exemplaire filmé, et en conformité avec les conditions du contrat de filmage.

Les exemplaires originaux dont la couverture en papier est imprimée sont filmés en commençant par le premier plat et en terminant soit par la dernière page qui comporte une empreinte d'impression ou d'illustration, soit par le second plat, selon le cas. Tous les autres exemplaires originaux sont filmés en commençant par la première page qui comporte une empreinte d'impression ou d'illustration et en terminant par la dernière page qui comporte une telle empreinte.

Un des symboles suivants apparaîtra sur la dernière image de chaque microfiche, selon le cas: le symbole \rightarrow signifie "A SUIVRE", le symbole ∇ signifie "FIN".

Les cartes, planches, tableaux, etc., peuvent être filmés à des taux de réduction différents. Lorsque le document est trop grand pour être reproduit en un seul cliché, il est filmé à partir de l'angle supérieur gauche, de gauche à droite, et de haut en bas, en prenant le nombre d'images nécessaire. Les diagrammes suivants illustrent la méthode.

ails
du
odifier
une
page

rata
o

elure.
à

. There

32X

F. K. BARNES & SONS' MONTHLY TIMBER CIRCULAR.

CANONS' MARSH, BRISTOL, July 1st, 1862.

The Timber Trade this month has not shown any great activity, but we expect, as the new arrivals come forward, that sales will be more readily effected. The old stocks are getting reduced, and with the prospect of higher Freights, we look for improving prices.

The arrivals for the past month are 10 Vessels 3928 Tons register, (against 11 Vessels 4098 Tons for the corresponding month last year), and consist of 1 from Quebec, 780 Tons; 2 from St. John, 1332 Tons; 6 from Danzig, Memel, and Stettin, 1570 Tons; and 1 from Christiania, 20 Tons; showing a decrease of 1 Vessel 168 Tons Register, compared with the corresponding month last year.

For the season commencing 1st February, 1862, to the present time, there have been 15 Vessels 5653 Tons Register arrived against 31 Vessels 8333 Tons Register for the same period last year, as will be seen on reference to the annexed Tables, (together with particulars of the importations,) showing a decrease of 16 Vessels, 6180 Tons Register.

Table showing the Import of the principal Articles of Wood, and the Tonnage employed from Feb. 1st to this date for the last three years.

IMPORTED FROM.		1860.	1861.	1862.	TONNAGE FROM.		
British America.							
Quebec Pine Timber	Logs	—	—	867	Quebec	—	780
Oak	—	—	—	23			
Elm Birch, &c.	—	—	—	—			
Deals	Pieces	—	—	900			
Pine Staves	—	—	—	1038			
W. I. Pine ditto	—	—	—	7200			
St. John's Pine Timber	Logs	1198	—	4	St. John	833	2889
Other Port ditto	—	—	—	—	Other Port	645	300
Birch	—	52	152	113			
New Brunswick, &c., Deals	Pieces	13504	88941	47204			
Baltic, United States, &c.							
Memel, Danzig, Stettin, &c., Fir Timber	Logs	4310	2323	4012	Memel, &c.	2315	1937
Oak	—	507	1020	485	Sweden and Norway	1775	3137
Swedish and Norway Fir Timber	—	1843	780	—			
Spare	Pieces	2931	6890	—	St. Petersburg	—	—
St. Petersburg Deals	—	—	—	—	Onega, &c.	—	—
Onega and Archangel ditto	—	—	—	—	Wyborg, Uleaborg, &c.	175	—
Swedish, Norway, Wyborg, &c., ditto	—	34277	102300	20668	United States, &c.	2882	3634
Pitch Pine Timber	Logs	1892	2485	—			
Ditto Deals	Pieces	782	1194	—			
Zahogany	Logs	558	798	—			
Cedar	—	151	61	—			
Teak and Greenheart	—	—	—	—			
					Total Tons	8467	11693
							6553

QUEBEC YELLOW PINE TIMBER.—The sales during the month have been unimportant. We have Cargo of new Timber arrived, and shall sell the same at our Auction Sale on the 23rd July.

QUEBEC RED PINE.—Small demand; we have fresh Timber arrived.

QUEBEC OAK.—Prices firm, the stock is ample.

QUEBEC BIRCH AND ELM.—No sales.

QUEBEC DEALS.—The old stock is almost cleared off, and as new Deals will cost higher, in consequence of the rise in freights, we look for improved prices. **Next Auction July 23rd.**

QUEBEC STAVES.—Fresh Staves have arrived. Owing to the absence of stock there has been no demand of late.

ST. JOHN PINE TIMBER.—Light in stock.

BIRCH.—We have a few Logs of Prince Edward's Island just arrived. It is worth our quotations.

NEW BRUNSWICK & SPRUCE DEALS.—The Cargoes per *Jane* and per *Union*, from St. John, N.B., have arrived, and are sold, the prices not to transpire. Owing to the great and rapid advance in freights, as well as the short supply of Tonnage in the Deal Port of New Brunswick, &c., there will be a great falling off in the importation of these Goods, and unless there be a considerable advance in prices very shortly existing Importers must lose heavily. We in this Market could soon rally our prices, were they not kept down by the depression in competing Ports, for the stock here is exceedingly light. We quote St. John Deals of 2nd and 3rd quality as worth £8 6s.; first quality £9 per Petersburg Standard Hundred.

PINE DEALS.—Stock light.

LATHWOOD.—Ditto.

BALTIC TIMBER, DANZIG, MEMEL, &c.—The demand has been fair, and prices are without change. **At our Auction on the 23rd** we shall sell some choice parcels.

SWEDISH TIMBER.—The stock is ample for the requirements prior to fresh importation.

WAINUT OAK.—None. A parcel of prime Memel Logs are expected.

OAK, DANZIG, MEMEL, &c.—None.

ST. PETERSBURG, ONEGA, AND ARCHANGEL DEALS are without change; the demand dull; prices fully maintained. **Next Auction July 23rd.**

MEMEL DEALS.—No new Deals.

SWEDISH, NORWAY, AND FINLAND.—Stock light. We are discharging a cargo of Gothenburg 7 x 3 and 7 x 2½ Redwood.

NORWAY SPARS.—We are expecting a cargo of Spars in time for our Sale on the 23rd inst.

PITCH PINE TIMBER.—None in first hands.

LATHWOOD.—Ample Stock.

STAV DANZIG, AND MEMEL.—No sales.

MANNARY.—None.

CEDE.—None.

TEAK.—We have a parcel of Dockyard Logs and Plank on hand.

GREENHEART.—Dull of Sale.

[F. K. BARNES & SONS' MONTHLY TIMBER CIRCULAR]
WHOLESALE PRICE CURRENT.

Canons' Marsh, Bristol, July 1st, 1862.

ARTICLES.	PRICES.	Imported from		ARTICLES.	PRICES.	Imported from	
		Feb. 1st, to July 1, 1861.	July 1, 1862.			Feb. 1st, to July 1, 1861.	July 1, 1862.
From Quebec.							
YELLOW PINE	1/2d to 1s 9d		867				
RED PINE	1 7 - 1 0						
OAK	2 6 - 2 9		22				
ELM	1 8 - 2 0						
ASH	1 0 - 2 0						
BIRCH	Nons.						
WALNUT							
YELLOW PINE DEALS,							
1st quality	120 Ptg. S. an.	14 0 - 16 10					
2nd quality	"(None)"	9 10 - 10 10		900			
3rd quality	"(None)"	8 0 - 9 10					
SPRUCE DEALS							
1st quality	"(None)"						
2nd quality	"(None)"						
STANDARD STAVES							
1st quality	1/2 mille	65 0 - 70 0		1036			
Brack	"(None)"						
Ditto, W. O. Pancheon	1200	18 0 - 20 0		7200			
1st quality							
Brack							
LATHWOOD	1/2 fath. of 144 feet	4 0 - 6 0		20			
HICKORY BILLETS	1/2 dozen	1 10 - 0 0					
OARS	1/2 foot run						
Ash	"(None)"						
Fir	"(None)"						
From St. John N.B. and Other Ports.							
St. John YELLOW PINE, 16 in.	1s 2d to 1s 9d						
BIRCH	1 0 - 1 4		1				
Miramohl & YELLOW PINE, 19 inches, Low Port	1 1 - 1 3		15	113			
BIRCH	1 2 - 1 3						
New Brunswick SPRUCE DEALS, 120 Petersburg Standard							
Ditto PINE DEALS (None)		8 1/2 - 8 1/2		88041	47204		
Prince Edward's Island } SPRUCE DEALS, and Nova Scotia } 120 Ptg. Stan. PINE		7 10 - 8					
PALINGS	1000	30s 0 - 60s	27850	16000			
LATHS		Nons.					
LATHWOOD	1/2 fath. of 144 ft.	6 1/2 - 6 1/2	20				
From United States, &c.							
PITCH PINE TIMBER PLANKS	1/2 foot cube	2 6 - 2 9	2435				
OAK LOGS	1/2 ft. of 1 in.	Nons.	1194				
EAST INDIA TEAK LOGS	1/2 foot cube	Nons.					
GREENHEART STAVES, Hogheads	1200 pos.	Nons.					
MAHOGANY	1/2 ft. of 1 in.	0 6 - 2 0					
Honduras		0 5 - 0 10		708			
Mexican		Nons.					
CEDAR, Hawaiian Pencil		0 7 - 0 8		61			
Baltic, &c.							
<i>From Riga, Danzig, and Memel, &c.</i>							
FIR TIMBER (Best)	1s 8d to 1s 8d						
Ditto (other kinds)	1 3 - 1 5			8923	4013		
OAK TIMBER							
Crown					850	435	
Brack		Nons.					
WAINSCOT LOGS							
Crown		6 0 - 7 0			40	50	
Brack		4 0 - 4 6					
SLEEPERS	1/2 sleeper	Nons.		368	13361		
DEALS Redwood	120 Ptg. Stan.						
Crown		11 0 - 11 10		801	2726		
2nd quality							
3rd quality							
DECK PLANKS	1/2 40 foot, 8 inch	20s 0 - 40s 0					
STAVES, Crown Pipe	1200	180 0 - 180 0					
1st Brack		110 0 - 120 0					
Brandy Pipe } in proportion					6600 Memel	2400 Memel	
Hoghead } 2197 Danzig						7110 Danzig	
Barrel							
LATHWOOD	1/2 fath. of 144 ft. cube	5 0 - 7 0	48		94		
<i>From Sweden, Norway, and Finland.</i>							
FIR TIMBER, Norway	1/2 foot cube	Nons.					
Ditto Swedish		1 14 - 1 3		780			
MASTS, 6 1/2 inches and upwards		Nons.					
SPARS, 4 to 6 inches	1/2 foot run	Nons.					
POLES, under 4 inches		Nons.					
Ditto, 2 1/2 feet	each	Nons.		6800	2515		
DEALS, &c.							
Christiana Redwood	120 Ptg. Stan.						
1st quality		Nons.					
2nd quality							
Gottenburg							
1st quality		12 0 - 13 0					
2nd & 3rd quality		10 0 - 11 0					
Swedish, 14 feet DEALS, handsawn		9 0 - 10 10		10149	17842		
Swedish DEALS & BATTENS, long millawo		8 10 - 10 10					
Norway & Short Swedish DEALS and BATTENS		8 0 - 9 0					
WHITE DEALS & BATTENS, 20s. to 50s. less							
Swedish LATHWOOD	1/2 fath. of 144 feet	5 0 - 7 0					
<i>From Russia and the White Sea.</i>							
Arch. and Onega DEALS	120 Ptg. Stan.						
1st quality		15 10 - 16 10					
2nd quality		11 0 - 12 0					
3rd quality		10 0 - 11 0					
St. Petersburg		11 10 - 13 0					
Ditto white		10 0 - 11 10					
Wyborg		13 0 - 12 0					
Utsborg and Bjorsborg		Nons.					
St. Petersburg LATHWOOD	1/2 fathom of 144 feet.	7 15 - 8 0					

N.B.—Deal and Batten Ends when sold with Cargo, are generally at two-thirds the price of the Deals and Battens respectively, (separately at three fourths.)

DUTIES ON WOOL

All Wood, Sawn or Split	2s. per load of 50 feet.
All Wood, Hewn	1s. ditto

July 1st, 1862.

Imported from Feb. 1st, to July 1, 1862.

392	4012
50	435
10	50
381	13361
801	2726
90 Memel 97 Dania	2400 Memel 7110 Dania
48	94
780	
6890	2515
01490	17842

of 50 feet.

ir Office, (anous' Marsh) in

